

# PURCHASE YOUR PERFECT CAR WITH



# SAHARA MOTORS

# Sahara Motors Dubai :- *About Us*

- **Sahara Motors** is well known for exporting Brand New Cars from Dubai, UAE. Sahara Motors was established in 2011 and our decade-long experience and expertise in handling various export markets and customers have made Sahara Motors the No.1 in the Brand New Car export business from Dubai to the world.
- We are specialists in supplying genuine tax-free brand new Toyota cars like Sedans, SUVs, Pickup Trucks, buses, Van, **customized vehicles** etc. for customers spread across the world.
- **Sahara Motors Dubai**, an **ISO 9001:2015 Certified company**, has been dealing with so many clients and provides transport solutions to meet their needs over a long period of time, which has made it the leader in the New Car export business.
- Our product range extends from low-cost budget vehicles to premium luxury riding options and our association with leading brands ensures that the customer is always endowed with superior quality, value for money, and the best solution for their transporting needs.



Certificate No: 40000186 QM15

ISO 9001:2015

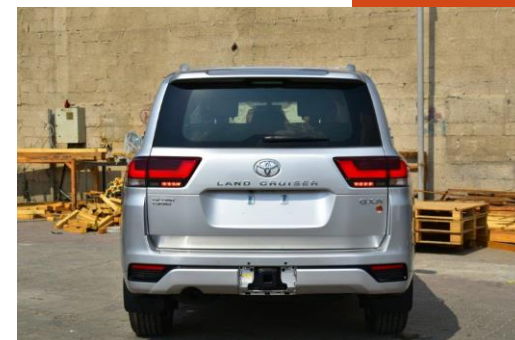
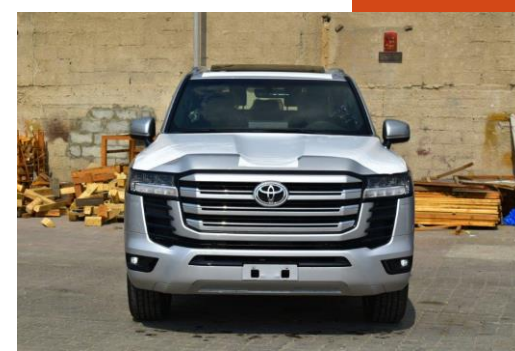


**WE BELIEVE IN BEING RELIABLE**

# 2022 MODEL TOYOTA LAND CRUISER 300 GXR-V V6 3.3L TWIN TURBO AUTOMATIC TRANSMISSION

MODEL CODE-FJA300L-GNUAYV  
ENGINE & DISPLACEMENT CC-3346  
DRIVETRAINHP (SAE NET) / RPM- 302  
TORQUE (SAE NET) KGM /RPM-71.4  
ENGINE TYPE-F33A-FTV, V6, DOHC - TWIN TURBO  
FUEL SYSTEM-FUEL INJECTION, EURO 0 (W/O OBD)  
FUEL TYPE-DIESEL  
FUEL TANK CAPACITY LTRS-110(SINGLE)  
TRANSMISSION-10- A/T MULTI MODE  
4WD OPTIONS-FULL TIME  
DIFF. OPTION- TORQUE SENSING CENTRE LSD+CENTRE &  
REAR DIFF LOCK  
TIRE SIZE- 265/55R20  
WHEEL CAP-ALLOY  
STEERING-POWER/TILT- WITH/WITH  
TELESCOPIC-WITH (POWER)  
BRAKE-FRONT/REAR-VENT.DISC/VENT.DISC  
SUSPENSION-FRONT DBL WISHBONE(IND.)  
REAR SUSPENSION-4 LINK -  
SAFETY ABS + BA + VSC + ATRC + TSC + HAC  
AIR BAGS- D + P + KNEE (D+P) + CURTAIN + SIDE (FR)  
BUMPER FRONT & REAR - COLOUR KEYED AERO + BLACK  
PLATING  
DOOR HANDLES-COLORED  
HIGH MOUNT STOP LAMP-WITH  
OUTER MIRRORS-TURN SIGNAL WITH + RETRACTABLE  
(AUTO) + ECM + REVERSE LINK  
SIDE STEP WITH COVER  
SPOILER  
SUN/MOON ROOF  
WINDSHIELD GLASS-GREEN W/TOP BAND + HEAT SHIELD  
ACCESSORY METER-4 "MULTI INFORMATION DISPLAY  
CONSOLE BOX <REAR>- (SYNTHETIC LTHR) WITH REAR AC  
VENT/COOL BOX  
DRIVE MODES- 3 MODES (NORMAL /ECO/SPORT)  
INNER REAR VIEW MIRROR-ELECTROCHROMIC  
FR. SEAT-FR. SEAT BELT-3PELRX2 + PT + FL(1)  
HEADREST-2  
POWER SEAT-WITH(D+P)  
VERTICAL SEAT ADJUSTER-WITH (D+P:POWER)  
RR. SEAT-RR. SEAT BELT- 3PELRx5  
HEAD REST- 3 (2ND ROW) + 2 (3RD ROW) 2<sup>ND</sup> ROW - 40:20:40 -  
3<sup>RD</sup>ROW SEAT FOLDING MANUAL

SEAT MATERIAL- SYNTHETIC LEATHER  
SEATING CAPACITY-7  
STEERING WHEEL- LEATHER + WOOD(TYPE1 BROWN) + AUDIO + MID  
+ BT + CRUISE + VOICE (PLATING)  
SUN VISOR- D+P+VANITY MIRROR+BULB+SLIDE  
AC/HEATER- AUTOMATIC (FR: LH & RH IND CONTROL)/REAR AUTO /  
WITH HEATER (FR)  
CRUISE CONTROL  
ILLUMINATED ENTRY SYSTEM- IGN. SW + ROOM LAMP + FRONT  
SCUFF PLATE ILLUM.  
KEYLESS ENTRY-SMART ENTRY (ALL DOORS) + PUSH  
START+PBD (LOW)  
POWER ANTENNA-GLASS INTEGRATED  
POWER DOOR LOCK  
POWER WINDOW  
RADIO-AM/FM  
STEREO- 9" DISPLAY AUDIO + BT + USB + WIFI, 6 SPKS  
WINDOW DEFOGGER  
WIPER FRONT- INTERMITTENT  
WIPER REAR-INTERMITTENT  
ANTI THEFT SYSTEM-WITH W/SECURITY HORN  
BACK CAMERA- WITH BGM  
CHILD RESTRAINT SYSTEM-WITH (SEAT) X2  
COMBINATION METER-OPTITRON TYPE  
EMBLEM-70TH ANNIVERSARY + TWIN TURBO  
FLOOR MATS  
FRONT FOG LAMP-WITH - LED  
HEADLAMP CLEANERS  
HEADLAMP LEVELING FUNCTION-MANUAL  
HEADLAMPS-(LOW / HIGH) - (LOW / HIGH) - LED + LED DRL (TYPE1  
REFRACTIVE TYPE)  
PARKING SENSORS-PARKING SUPPORT FR4 + RR4)  
TOWING HITCH  
RADIATOR GRILLE- CHROME + SILVER  
REAR BUMPER STEP GUARD  
REAR FOG LAMP  
REAR LUGGAGE DOOR-HATCH TYPE: POWER BACK DOOR +  
AUTO/EASY CLOSER DOOR  
REMOTE ENGINE STARTER-WITH (1-WAY)  
ROOF RAI  
SPARE WHEEL CARRIER-FLOOR W/ LOCK

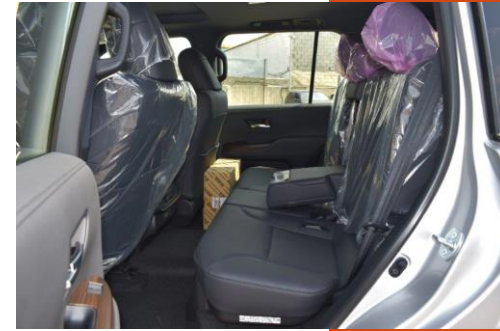
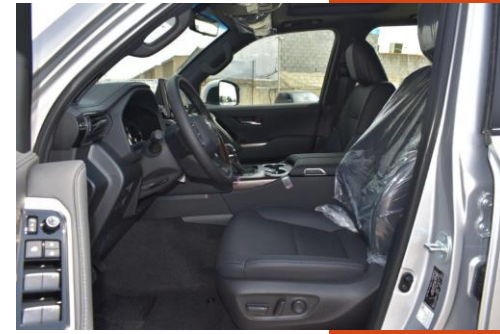


**(Continue...)**

**FIRE EXTINGUISHER  
GRADE MARK-GXR  
PARKING BRAKE-ELECTRIC TYPE+BRAKE HOLD  
REAR COMBINATION LAMP-LED  
WOODGRAIN PACKAGE-WITH(CONSOLE  
BOX+STEERING+DOOR TRIM)-TYPE1 BROWN  
DOOR INSIDE HANDLE-PLATING  
INSTRUMENT PANEL-HIGH  
TIRE PRESSURE MONITORING SYSTEM  
USB FAST CHARGER-FR1 + RR1(2) + RR2(2)**

**DIMENSIONS AND WEIGHT**

**LX WX H MM-5015 X 1980 X 1890  
WHEEL BASE MM-2850  
GROUND CLEARANCE MM-235  
MIN. TURNING RADIUS (M)-5.9  
GROSS VEHICLE WEIGHT (KGS)-3230**



# 2022 MODEL TOYOTA LAND CRUISER 300 VX-R V6 3.3L DIESEL TWIN TURBO AUTOMATIC TRANSMISSION

MODEL CODE – FJA300L - GNUZYV

## TECHNICAL FEATURES

ENGINE: F33A-FTV, 3.3L, TWIN TURBO

OUTPUT(HP/RPM): 302/4000

TORQUE(NM/RPM): 700/2600

TRANSMISSION: 10 SPEED AUTOMATIC

TERRAIN: 4X4

TIRE SIZE: 265/55R20

FUEL TANK CAPACITY: 110 LTR

SEATING CAPACITY: 7

FUEL EFFICIENCY(KM/L): 12.5

EMISSION STANDARD – EURO IV

## INTERIOR FEATURES

AIR CONDITION: FOUR-ZONE

SEAT MATERIAL: PREMIUM LEATHER

WOOD GRAIN PACKAGE: WALNUT

STEERING WHEEL: LEATHER

OPTITRON METER WITH MULTI-INFORMATION

DISPLAY 7” SCREEN

POWER SEATS: DRIVER+PASSENGER

ELECTRIC PARKING BRAKE WITH BRAKE HOLD

REMOTE ENGINE STARTER WITH MOBILE APP

REAR ARMREST

POWER TILT & TELESCOPIC STEERING COLUMN AND

MEMORY

VENTILLATED SEATS: FRONT & 2<sup>ND</sup> ROW

WIRELESS CHARGER

DRIVER MEMORY FUNCTION

THIRD ROW POWER SEATS

HEAD UP DISPLAY

AUDIO&ENTERTAINMENT SYSTEM

AUDIO: AM/FM+FM SUB +DAB+ ROOF(TEL+GPS)) 12.3”

NAVIGATION

NUMBER OF SPEAKERS: 14JBL

APPLE CARPLAY & ANDROID AUTO

11” REAR SEAT ENTERTAINMENT WITH BLUETOOTH

CONNECTED HEADPHONES

## EXTERIOR FEATURES

ALLY WHEELS 20” (265/55R20)

SUNROOF

ROOF RAIL: INTEGRATED

DOOR MIRRORS+POWERED RETRACTABLE: CHROME

LED HEADLIGHTS WITH DRLS

LED FRONT FOG LAMPS

HEADLIGHT LEVELING: AUTO

ROOF SPOILER

FRONT&REAR BUMPERS: AEROKIT+PLATING

POWERED BACK DOOR: WITH KICK SENSOR

HEADLIGHT CLEANERS

## SAFETY FEATURES

ANTI-LOCK BRAKING SYSTEM (ABS), BRAKE ASSIST (BA)

DUAL FRONT & KNEE AIRBAGS

SIDE & CURTAIN AIRBAGS

DIFFERENTIAL LOCK: TORQUE SENSING LSD

REAR VIEW CAMERA: PANAROMIC VIEW + WASHER

CRAWL CONTROL

E-CALL: EMERGENCY CALL SYSTEM

3D MULTI TERRAIN MONITOR

ADAPTIVE VARIABLE SUSPENSION(AVS)

## TOYOTA SAFETY SENSE PACKAGE

CRUISE CINTROL: DYNAMIC RADAR CRUISE

PARKING SUPPORT BRAKE

LANE DEPARTURE ALERT(LDA)+STEERING VIBRATION: LANE

TRACE ASSIST

AUTO HIGH BEAM: ADAPTIVE HIGH BEAM SYSTEM

PRE-COLLISION SYSTEM (PCS)

BLIND SPOT MONITOR

## DIMENSIONS AND WEIGHT

DIMENSIONS (MM): L 5145 X W 1980 X H 1890

GROSS WEIGHT(KG):3,230



# Sahara Motors Dubai :- *What makes us Trusted and Reliable brand new car exporter?*

- Sahara Motors, an [ISO 9001-2015 Certified](#) Company
- We are a Verified [Global Trusted E-Network member](#) by Dubai Chamber of Commerce.
- We offer great value for your money and a wide selection of [Toyota Cars](#) at Sahara Motors Dubai.
- **Excellent Customer Service 24 X 7**
- We also do Customization of Vehicles as per requirements of our customers.
- We provide **logistic support** to our customers.
- We can transport vehicles at the most competitive price in any part of the world for our customers.
- We have a professional and experienced team that delivers a delightful experience to its customers when they purchase their dream vehicle from Sahara Motors, Dubai.
- We establish long-term business through our high-end service and partnerships based on respect and transparent deals.

**WE BELIEVE IN BEING RELIABLE**

# Sahara Motors Dubai :- *Contact Us*

**Address:** Sahara Motors, Block 3, Showroom 25, Dubai Auto Market,  
Al Awir, Ras Al Khor, Post Box - 47876, Dubai, U.A.E

**Contact Number:** +971 4 3332623, +971 4 3455924

**Call/WhatsApp:** +971 56 9963661 / +971 56 1144253 / +971 544400938 / +971 569957707

**Fax:** +971 4 3332643

**email:** [info@saharamotorsuae.com](mailto:info@saharamotorsuae.com)

**Website:** [www.saharamotorsuae.com](http://www.saharamotorsuae.com)



**WE BELIEVE IN BEING RELIABLE**