

PURCHASE YOUR PERFECT CAR WITH



SAHARA MOTORS

Sahara Motors Dubai :- *About Us*

- **Sahara Motors** is well known for exporting Brand New Cars from Dubai, UAE. Sahara Motors was established in 2011 and our decade-long experience and expertise in handling various export markets and customers have made Sahara Motors the No.1 in the Brand New Car export business from Dubai to the world.
- We are specialists in supplying genuine tax-free brand new Toyota cars like Sedans, SUVs, Pickup Trucks, buses, Van, **customized vehicles** etc. for customers spread across the world.
- **Sahara Motors Dubai**, an **ISO 9001:2015 Certified company**, has been dealing with so many clients and provides transport solutions to meet their needs over a long period of time, which has made it the leader in the New Car export business.
- Our product range extends from low-cost budget vehicles to premium luxury riding options and our association with leading brands ensures that the customer is always endowed with superior quality, value for money, and the best solution for their transporting needs.



Certificate No: 40000186 QM15

ISO 9001:2015



WE BELIEVE IN BEING RELIABLE

2022 MODEL TOYOTA HILUX DOUBLE CAB PICKUP GR-SPORT 2.8L **DIESEL 4WD AUTOMATIC TRANSMISSION**

MODEL CODE-GUN126L-DTTHXV

ENGINE & DISPLACEMENT CC-2755

DRIVETRAIN HP SAE (NET)-201

TORQUE KGM SAE (NET)-51

ENGINE TYPE-4 CYL,16V, DOHC

FUEL SYSTEM-EFI W/ COMMON RAIL& INTERCOOLER
(EURO4 W/OBD)

FUEL TYPE-DIESEL

FUEL TANK CAPACITY LTRS-80 LTR

CATALYTIC CONVERTER

TRANSMISSION-6-SPEED A/T

4WD OPTIONS PART-TIME

DIFF. OPTION-REAR DIFF LOCK W/ AUTO

DISCONNECT DIFFERENTIAL(ADD)

TIRE SIZE-265 / 60 R18 ALL TERRAIN <GR-SPORT>

WHEEL CAP-ALLOY W/ALLOY SPARE TIRE

STEERING-POWER/TILT WITH/WITH & TELESCOPIC

BRAKE FRONT/REAR-V.DISC/DRUM

SUSPENSION-FRONT/REAR MONOTUBE GR-S

SUSPENSION

SAFETY-ABS + EBD + BA + VSC

AIR BAGS-D + P + KNEE (DRIVER)

HILL ASSIST CONTROL + TRAILER SWAY CONTROL

WITH

BUMPER-FRONT & REAR- COLOUR KEYED /STEEL

STEP PAINTED <GR-SPORT>

DOOR HANDLES-COLOURED

HIGH MOUNT STOP LAMP LED

OUTER MIRROR COLOUR KEYED BLACK WITH TURN

SIGNAL + WELCOME LIGHT + POWER

SIDE STEP

SIDE STRIPE -WITH GR-SPORT DESIGN (OE)

WINDSHIELD GLASS-GREEN LAMINATED W/TOP

SHADE (IR CUT)

CONSOLE BOX-CONSOLE BOX WITH SOFT LID

FRONT SEAT-FR. SEAT BELT-3PELRX2 W/PT & FL

VERTICAL SEAT ADJUSTER-W/ DRIVER

REAR SEAT BELT-3PELRX2 + 2PNRX1

HEAD REST-WITH (3 NO.)

CENTRE ARMREST-W/ CUP HOLDER

DIGITAL CLOCK- WITH

INNER REAR VIEW MIRROR-DAY/NIGHT

SEAT MATERIAL-GR-S SUEDE + LEATHER

SEATING CAPACITY-5

SUN VISOR-DRIVER (W/HOLDER) + PASSENGER (W/MIRROR & LID)

TACHOMETER-WITH

AC/HEATER-WITH (AUTO) + REAR DUCT / WITH

ANTENNA-SHARK FIN

AUDIO-8" NAVIGATION, USB, BT, 6 SPKR

KEYLESS ENTRY-SMART + PUSH START

METER ILLUMINATION CONTROL

POWER DOOR LOCK

POWER WINDOW

RADIO-AM/FM

WIPER FRONT-ADJ. INTERMITTENT: MIST

LIGHT CONTROL SYSTEM-W/ FOLLOW ME HOME

ANTI-THEFT IMMOBILISER-WITH

BACK VIEW CAMERA-WITH (OE) + PVM

BEDLINER-WITH <GR-SPORT>

COOL GLOVE BOX

CRUISE CONTROL

DOOR COURTESY LAMP WITH REFLECTOR

ECO/POWER MODE

FLOOR MAT (OE)

FRONT FOG LAMP-WITH(LED) <GR-SPORT>

HEADLAMP-LED W/ AUTO LEVELLING

MUFFLER CUTTER (OE)- WITH

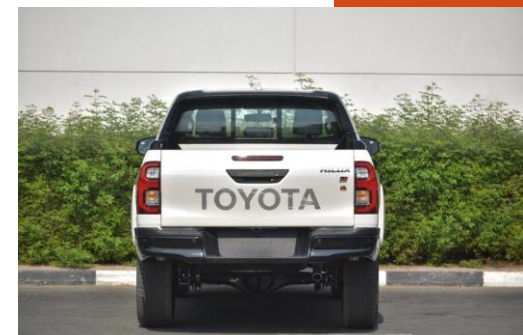
MULTI INFO DISPLAY-W/ TFT TYPE

RADIATOR GRILLE-GREY PAINTED

REAR FOG LAMP

REAR WINDOW SLIDE TYPE

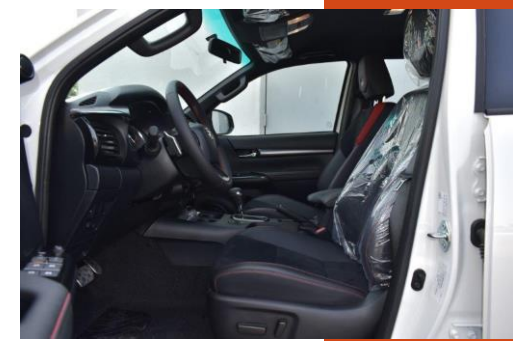
SAFETY KIT



Continued.....

**SHIFT LEVER KNOB- W/ LEATHER
STEERING WHEEL-GR-S SOFT LEATHER W/ SWITCHES
TAILGATE LIFT ASSIST
GR-SPORT-DECKBAR, BEDLINER, TAILGATE LIFT
ASSIST, GRILLE - PAINTED, BLACK OVERFENDER -
WIDE, GRS LOGO, SPORTY SEATS
IR CUT GLASS (FR + SIDE + RR)
SENSORS-FR2 + RR4
TYRE PRESSURE MONITORING SYSTEM**

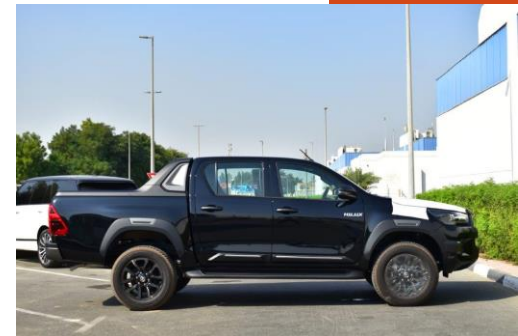
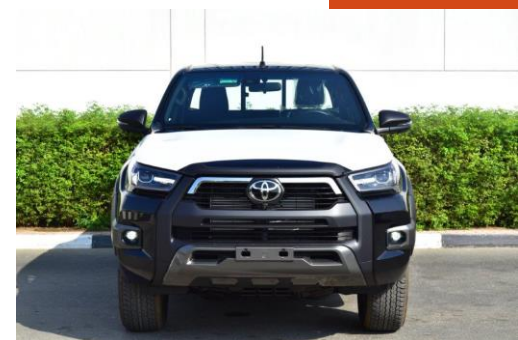
**DIMENSIONS AND WEIGHT
DIMENSIONS LX WX H MM-5325 X 1900 X 1815
DECK DIMENSIONS LX WX H MM 1520 X 1575 X 480
WHEEL BASE MM-3085
GROUND CLEARANCE MM-310
KERB WEIGHT (KGS)-2015-2110
GROSS VEHICLE WEIGHT (KGS)-2910**



2022 MODEL TOYOTA HILUX DOUBLE CAB PICKUP ADVENTURE 2.8L DIESEL 4WD AUTOMATIC TRANSMISSION

MODEL CODE - GUN126L-DTTHXV
ENGINE- 1GD FTV, 2.8LTR, 4 CYL, 16 V, DOHC, TURBO
COMMON-RAIL DIESEL W/WINTERCOOLER (EURO4
W/OBD)
ENGINE DISPLACEMENT CC-2755
DRIVETRAIN-HP SAE (NET)-201
TORQUE KGM SAE (NET)- 51
FUEL TYPE-DIESEL
FUEL TANK CAPACITY LTRS-80
CATALYTIC CONVERTER
TRANSMISSION-6-SPEED A/T
4WD OPTIONS- PART-TIME
DIFF. OPTION-REAR DIFF LOCK W/ AUTO
DISCONNECT DIFFERENTIAL(ADD)
TIRE SIZE-265 / 60 R18 ALL TERRAIN <ADVENTURE>
ALLOY W/SPARE TIRE ALLOY
STEERING-POWER/TILT-WITH/WITH & TELESCOPIC
BRAKE FRONT/REAR-V.DISC/DRUM
SUSPENSION-FRONTDOUBLE WISHBONE + REAR
LEAF SPRING
ABS+EBD+BA
AIR BAGS-DRIVER + PASSENGER + KNEE (DRIVER)
VSC+HILLSTART ASSIST CONTROL (HAC) + TRAILER
SWAY CONTROL (TSC) + DOWNHILL ASSIST (DAC)
BUMPER-FRONT & REAR- COLOUR KEYED /STEEL
STEP PAINTED<ADVENTURE>
DOOR HANDLES-BLACK<ADVENTURE>
MUD GUARDS (FRONT + REAR)
HIGH MOUNT STOP LAMP
OUTER MIRROR COLOUR KEYED-BLACK WITH TURN
SIGNAL<ADVENTURE> + WELCOME LIGHT
POWER WITH
SIDE STEP
SIDE STRIPE NEW DESIGN ADVENTURE
WINDSHIELD GLASS-GREEN LAMINATED W/TOP
SHADE
CONSOLE BOX- CONSOLE BOX WITH SOFT
LID+SILVER+REGISTER
FR. SEAT-FR. SEAT BELT 3PELRX2 W/PT & FL

VERTICAL SEAT ADJUSTER
RR. SEAT-RR. SEAT BELT 3PELRX2+2PNRX1
HEAD REST WITH (2 NO.)
CENTRE ARMREST
DIGITAL CLOCK
INNER REAR VIEW MIRROR-DAY/NIGHT
SEAT MATERIAL-DARK GRAY FABRIC <ADVENTURE DESIGN>
SEATING CAPACITY-5
SUN VISOR-D(W/HOLDER) + P(W/MIRROR & LID)
TACHOMETER
AC/HEATER-WITH (AUTO)+REAR DUCT / WITH
ANTENNA-SHORT POLE
AUDIO- 8" DA WITH USB/BT,6 SPK
KEYLESS ENTRY- SMART + PUSH START
METER ILLUMINATION CONTROL
POWER DOOR LOCK
POWER WINDOW
RADIO- AM/FM
WIPER FRONT-ADJ. INTERMITTENT: MIST
OTHERS-LIGHT CONTROL SYSTEM-W/ FOLLOW ME HOME
ANTI-THEFT IMMOBILISER
ADVENTURE DOME BADGE
BACK VIEW CAMERA-WITH + PVM
ADVENTURE EMBLEM (OE)
COOL GLOVE BOX
CRUISE CONTROL-RADAR CRUISE CONTROL
DOOR COURTESY LAMP-W/ REFLECTOR
ECO/POWER DRIVE MODE
FRONT FOG LAMP-WITH(LED)<ADVENTURE>
HEADLAMP-LED W/ AUTO LEVELLING<ADVENTURE>
MUFFLER CUTTER (OE)
MULTI INFO DISPLAY-W/ TFT TYPE
RADIATOR GRILLE- BLACK + CHROME <ADVENTURE DESIGN>
REAR FOG LAMP
REAR WINDOW
SAFETY KIT
SHIFT LEVER KNOB-LEATHER W/ BLACK ACCENTS
STEERING WHEEL- URETHANE W/ CONTROL SWITCHES,
BLACK ACCENTS

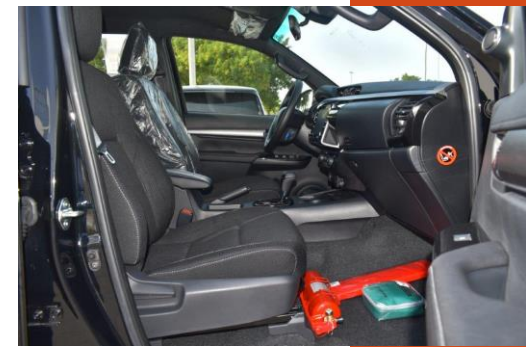


[Continue...](#)

DECK TYPE-A'DECK WITHOUT GUARD FRAME
TAILGATE LIFT ASSIST
ADVENTURE
PACKAGE:BUMPER/GRILLE/OVERFENDER/FOG
LAMP/18" ALLOY/DECK BAR/BEDLINER/ADVENTURE
EMBLEM/SPORTY SEATS/BLACK DOOR HANDLES &
MIRRORS/BLACK INTERIOR
HOOD LIFT ASSIST
IR CUT GLASS (FR+SIDE+RR)
TOYOTA SAFETY SENSE (RADAR CRUISE
CONTROL+LANE DEPARTURE ALERT)
SENSORS-FR2+RR4

DIMENSIONS AND WEIGHT

DIMENSIONS LX WX H MM-5325 X 1900 X 1815
DECK DIMENSIONS LX WX H MM 1520 X 1575 X 480
WHEEL BASE MM-3085
GROUND CLEARANCE MM-310
KERB WEIGHT (KGS)-2015-2110
GROSS VEHICLE WEIGHT (KGS)-2910



Sahara Motors Dubai :- *What makes us Trusted and Reliable brand new car exporter?*

- Sahara Motors, an [ISO 9001-2015 Certified](#) Company
- We are a Verified [Global Trusted E-Network member](#) by Dubai Chamber of Commerce.
- We offer great value for your money and a wide selection of [Toyota Cars](#) at Sahara Motors Dubai.
- **Excellent Customer Service 24 X 7**
- We also do Customization of Vehicles as per requirements of our customers.
- We provide **logistic support** to our customers.
- We can transport vehicles at the most competitive price in any part of the world for our customers.
- We have a professional and experienced team that delivers a delightful experience to its customers when they purchase their dream vehicle from Sahara Motors, Dubai.
- We establish long-term business through our high-end service and partnerships based on respect and transparent deals.

WE BELIEVE IN BEING RELIABLE

Sahara Motors Dubai :- *Contact Us*

Address: Sahara Motors, Block 3, Showroom 25, Dubai Auto Market,
Al Awir, Ras Al Khor, Post Box - 47876, Dubai, U.A.E

Contact Number: +971 4 3332623, +971 4 3455924

Call/WhatsApp: +971 56 9963661 / +971 56 1144253 / +971 544400938 / +971 569957707

Fax: +971 4 3332643

email: info@saharamotorsuae.com

Website: www.saharamotorsuae.com



WE BELIEVE IN BEING RELIABLE