

**TOYOTA**

**TOYOTA  
SIENNA**



# **2023 MODEL TOYOTA SIENNA XLE HYBRID 2.5L FWD 8-SEATER AUTOMATIC**

**MODEL CODE AXLH40L-PPXHA**

## **POWERTRAIN & MECHANICAL**

**2.5 LITRE 4-CYLINDER DOHC 16-VALVE**

**HYBRID SYNERGY DRIVE**

**ENGINE – EV MODE**

**DIRECT INJECTION D4-S**

**VARIABLE VALVE TIMING WITH INTELLIGENCE ON EXHAUST CAM (VVT-I)**

**VARIABLE VALVE TIMING WITH INTELLIGENCE ELECTRICALLY DRIVEN ON INTAKE CAM (VVT-IE)**

**HORSEPOWER (KW)245 (183)**

**TRANSMISSION-ELECTRONICALLY CONTROLLED CONTINUOUSLY VARIABLE TRANSMISSION (ECVT)**

**DRIVE MODE SELECT (SPORT, ECO AND NORMAL MODES)**

**EXHAUST TIP**

**FUEL CAPACITY LITRES (GAL.)68 (18)**

**FUEL CONSUMPTION - CITY/HIGHWAY/COMBINED  
L/100KM6.6/6.5/6.6**

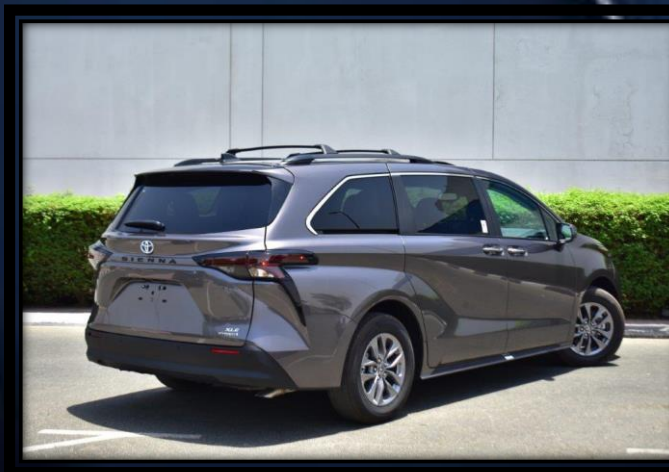
**FUEL CONSUMPTION - CITY/HIGHWAY/COMBINED  
MPG43/43/43**

**BRAKES-ELECTRIC PARKING BRAKE (EPB), REAR DISC BRAKES,  
FRONT DISC BRAKES**

**STEERING MECHANICAL-ELECTRIC POWER STEERING (EPS)**

**SUSPENSION-FRONT AND REAR STABILIZER BAR**

**TOWING PREP PACKAGE: ENGINE OIL COOLER, PLUS HEAVY-DUTY RADIATOR AND FAN**



**SAFETY & CONVENIENCE**

**SEATING CAPACITY 8**

**FRONT SEAT MOUNTED SIDE AIRBAGS**

**BLIND SPOT MONITOR WITH RCTA**

**BACKUP CAMERA**

**CHILD PROTECTOR REAR DOOR LOCKS**

**FRONT PASSENGER SEAT CUSHION AIRBAG**

**REAR SEAT SIDE AIRBAGS**

**SIDE CURTAIN AIRBAGS**

**DRIVER AIRBAG SUPPLEMENTAL RESTRAINT SYSTEM (SRS)**

**PASSENGER AIRBAG SUPPLEMENTAL RESTRAINT SYSTEM (SRS)**

**UPPER TETHER FOR CHILD RESTRAINT SEATS (MIDDLE: 3, REAR:**

**2)**

**ENGINE IMMOBILIZER**

**ANTI-THEFT ALARM SYSTEM**

**TIRE PRESSURE MONITORING SYSTEM WITH AUTO LOCATION**

**DRIVER'S COIN CASE COMPARTMENT**

**12V DC ACCESSORY CONNECTOR: FRONT**

**2ND ROW SUNSHADE ON SLIDING DOORS**

**COAT HOOKS (SECOND ROW: 2, THIRD ROW: 2)**

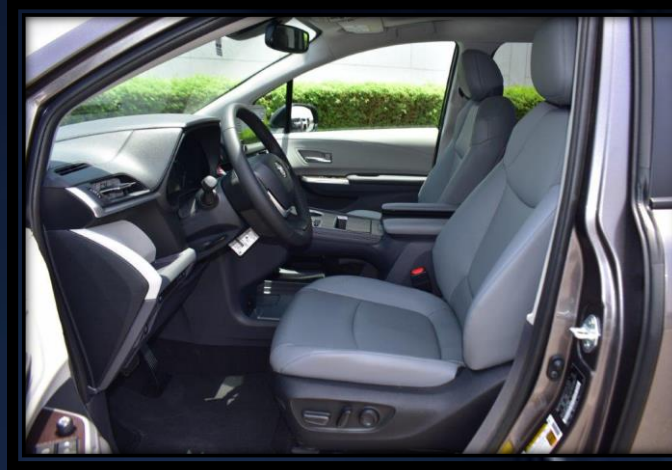
**ASSIST GRIPS (FRONT PASSENGER: 1, 2ND ROW: 4)**

**BRIDGE CONSOLE WITH STORAGE COMPARTMENT**

**SMART KEY SYSTEM**

**POWER REAR DOOR WITH KICK SENSOR**

**POWER SLIDING DOORS WITH KICK SENSOR**





**TOYOTA SAFETY SENSE / STAR SAFETY SYSTEM**

**FULL-SPEED RANGE DYNAMIC RADAR CRUISE CONTROL  
PRE-COLLISION SYSTEM WITH PEDESTRIAN DETECTION AND BICYCLE  
DETECTION  
LANE TRACING ASSIST  
AUTO HIGH BEAM  
LANE DEPARTURE ALERT WITH STEERING ASSIST AND ROAD EDGE  
DETECTION  
SMART STOP TECHNOLOGY, VEHICLE STABILITY CONTROL, ANTI-LOCK  
BRAKES, TRACTION CONTROL, ELECTRONIC BRAKE FORCE DISTRIBUTION,  
BRAKE ASSIST , PUSH BUTTON START**

**INFOTAINMENT & AUDIO**

**ANDROID AUTO COMPATIBILITY  
APPLE CARPLAY COMPATIBILITY  
BLUETOOTH CAPABILITY  
9" TOUCH SCREEN  
7 USB CHARGING PORTS  
8 SPEAKERS**

**AUDIO PLUS WITH REMOTE – INCLUDES REMOTE CONNECT ( 4.2-IN. COLOUR TFT MULTI INFORMATION DISPLAY**



**WINDOWS**-POWER WINDOWS WITH AUTO UP/DOWN FOR ALL WINDOWS / REAR WINDOW DEFROSTER

**SEATS**-HEATED FRONT SEATS, 8-WAY POWER ADJUSTABLE DRIVERS SEAT, 3RD ROW FOLDABLE 60/40 SEATS, 4-WAY POWER ADJUSTABLE DRIVER SEAT LUMBAR SUPPORT, 4-WAY POWER ADJUSTABLE PASSENGER SEAT

**STEERING WHEEL**-TILT & TELESCOPIC STEERING WHEEL, HEATED LEATHER WRAPPED STEERING WHEEL

**CLIMATE CONTROL**-CABIN AIR FILTER, 4-ZONE INDEPENDENT AUTOMATIC CLIMATE CONTROL

**INTERIOR MIRRORS**-ILLUMINATED VANITY MIRRORS, AUTO-DIMMING REAR VIEW MIRROR

**TRIM**-LEATHER WRAPPED SHIFT KNOB

**EXTERIOR MIRRORS**-HEATED EXTERIOR MIRRORS

**WIPERS**-WINDSHIELD WIPER DE-ICER, VARIABLE INTERMITTENT WIPERS, INTERMITTENT REAR WINDOW WIPER

**EXTERIOR**-BLACK PAINTED ROOF RAILS, FRONT & REAR SPLASH GUARDS, REAR SPOILER, POWER SLIDE / TILT MOONROOF

**EXTERIOR LIGHTING**-DAYTIME RUNNING LIGHTS, LED REAR COMBINATION LAMPS, LED HEADLAMPS, HIGH MOUNT STOP LAMP

**TIRES**-P235/65R17 +TIRE REPAIR KIT

**WHEELS**-17" ALLOY WHEELS



# CONTACT US

## Sahara Motors

Address: Block 3, Showroom no.25, Al Awir,  
Ras Al khor Auto Market, Dubai, UAE

Land Line: +971 43332623

Email: [info@saharamotorsuae.com](mailto:info@saharamotorsuae.com)



Visit Website